

STERLING TEMPERATURE CONTROL UNIT
SERVICE AND INSTRUCTION MANUAL
MODEL - 6016-M

Engineered and manufactured by INDUSTRIAL CONTROL DIVISION
STERLING, INC.

5200 West Clinton Avenue, Milwaukee, Wisconsin 53223
Manufacturers of Temperature Control Equipment since 1916

Please note that our address and phone information has changed. Please reference this page for updated contact information.



These manuals are obsolete and are provided only for their technical information, data and capacities. Portions of these manuals detailing procedures or precautions in the operation, inspection, maintenance and repair of the products may be inadequate, inaccurate, and/or incomplete and shouldn't be relied upon. Please contact the ACS Group for more current information about these manuals and their warnings and precautions.

Parts and Service Department

The ACS Customer Service Group will provide your company with genuine OEM quality parts manufactured to engineering design specifications, which will maximize your equipment's performance and efficiency. To assist in expediting your phone or fax order, please have the model and serial number of your unit when you contact us. A customer replacement parts list is included in this manual for your convenience. ACS welcomes inquiries on all your parts needs and is dedicated to providing excellent customer service.

For immediate assistance, please contact:

- North, Central and South America, 8am – 5pm CST +1 (800) 483-3919 for drying, conveying, heating and cooling and automation. For size reduction: +1 (800) 229-2919.
North America, emergencies after 5pm CST (847) 439-5855
North America email: acsuscanadacustserv@corpemail.com
- Mexico, Central & South America
Email: acslatinamericacustserv@corpemail.com
- Europe, Middle East & Africa +48 22 390 9720
Email: acseuropecustserv@corpemail.com
- India +91 21 35329112
Email: acsindiacustserv@corpemail.com
- Asia/Australia +86 512 8717 1919
Email: acsasiacustserv@corpemail.com

Sales and Contracting Department

Our products are sold by a worldwide network of independent sales representatives. Contact our Sales Department for the name of the sales representative nearest you.

Let us install your system. The Contract Department offers any or all of these services: project planning; system packages including drawings; equipment, labor, and construction materials; and union or non-union installations.

For assistance with your sales or system contracting needs please Call:

North, Central and South America +1 (262) 641-8600 or +1 (847) 273-7700 Monday–Friday, 8am–5pm CST

Europe/Middle East/Africa +48 22 390 9720

India +91 21 35329112

Asia/Australia +86 512 8717 1919

Facilities:

ACS offers facilities around the world to service you no matter where you are located. For more information, please visit us at www.acscorporate.com

United States:

ACS Schaumburg – Corporate Offices

1100 E. Woodfield Road
Suite 588
Schaumburg, IL 60173
Phone: + 1 847 273 7700
Fax: + 1 847 273 7804

ACS New Berlin – Manufacturing Facility

2900 S. 160th Street
New Berlin, WI 53151
Phone : +1 262 641 8600
Fax: + 1 262 641 8653

Asia/Australia:

ACS Suzhou

109 Xingpu Road SIP
Suzhou, China 215126
Phone: + 86 8717 1919
Fax: +86 512 8717 1916

Europe/Middle East/Africa:

ACS Warsaw

Ul. Działkowa 115
02-234 Warszawa
Phone: + 48 22 390 9720
Fax: +48 22 390 9724

India

ACS India

Gat No. 191/1, Sandbhor Complex
Mhalunge, Chakan, Tal Khed,
Dist. Pune 410501, India
Phone: +91 21 35329112
Fax: + 91 20 40147576

MODEL 6016-M

DESCRIPTION:

FLUID HEATING:

Heating of the Fluid is accomplished through the specially designed low watt density electrical immersion heater inserted into the heater tank; the immersion heater temperature is controlled by the manual indicating thermostat mounted on the front of the control panel. - a safety thermostat is installed on the electrical panel; this safety thermostat is set at 530° F. during testing at the factory. The safety thermostat has its own sensing bulb inserted in the heater flange completely separated from the control system.

The Model 6016-M is supplied with a 6-KW, 3-phase low watt density immersion heater; activating a magnetic contactor.

A 2" heater tank is used for the 6 KW immersion heater.

KW ratings of the immersion heater are rated at the following standard voltages:

208V, 240V, 380V, 415V, 480V, 600V

6 KW 10 GPM @ 30 PSI 20,490 BTU/hr.

CIRCULATION:

PUMP:

Circulation of the fluid is controlled by a slow speed, high temperature, positive displacement pump, which is belt-driven by the electric motor. It may be supplied with a drip return pump as an option.

We can supply a field installation kit of a Drip Return Pump #C-682-00380-1 for units that were originally supplied with a drip pan only.

The packed pump drips oil; this indicated that the pump is getting proper lubrication; it is very important that this is kept clean.

COOLING:

A specially designed shell and tube type heat exchanger of copper nickel with stainless steel expansion joints is provided as standard equipment in these units. The standard size offered is approximately 1.5 sq. ft. in surface area.

MODEL 6016-M

FUL-FLO VALVE:

The purpose of this valve is a safety device that in the event the delivery line has been obstructed and the pressure in the line exceeds the set pressure on the pressure gauge, the Ful-Flo Valve will open and divert the fluid back into the return line.

CIRCULATING CONNECTION LINES:

Delivery and return lines of the unit are 1" female pipe thread. These lines are located at the top of the unit.

The Model 6016-M is equipped with a heat exchanger, a water supply line rated at 65 PSI maximum is required and a drain line is necessary. (Caution: The drain line should be directed away from personnel and flow directly into an open drain. This drain line must not have any back pressure or obstructions).

Requirements for water connections are:

<u>SUPPLY</u>	<u>DRAIN</u>
1/2"	3/4"

Sterling Inc. stocks the recommended types of Flexible Metal Hoses in many lengths; our P/N A-572-16969-00. Please state length requirements when ordering.

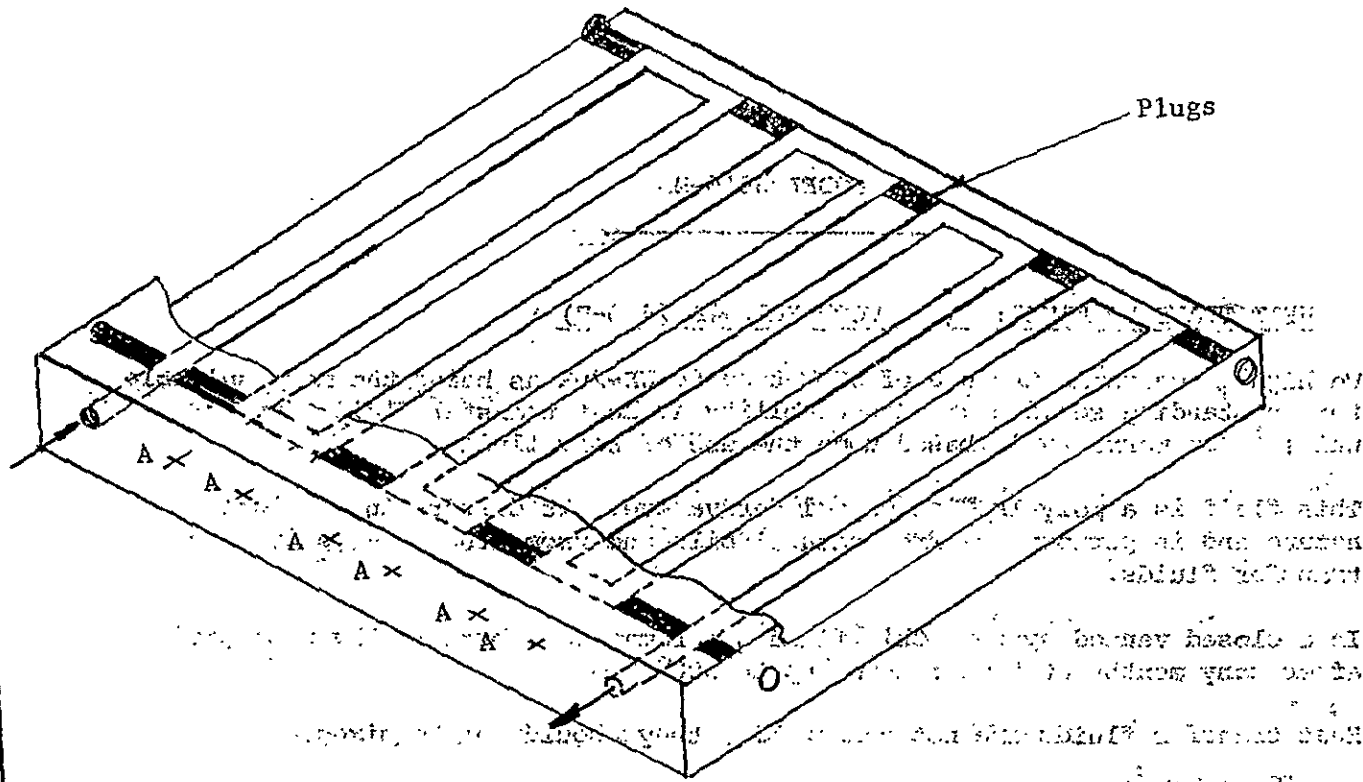
Hoses must be adequate to withstand the maximum temperatures and pressures at which the unit is to be operated.

Hoses, fittings and channel connections in the mold or other equipment being controlled should be at least 3/4" in order not to restrict the flow of fluid through the circuit; if the flow is restricted by too small of connecting hoses or hoses with excess bends, loops, etc., the pressure relief valve will open and the flow through the internal circulating lines will be greatly reduced.

If your mold, (i.e. has already been made with serpentine channeling), we would like to suggest modification as shown in Fig. A-082-03844 and using a manifold, preferably of 3/4" NPT pipe.

In order to eliminate any back pressure, it would be advisable to drill holes at points 'A' and tap for 3/4" pipe.

Several parallel runs are far more practical than one long serpentine run and in many cases, can make a difference between precise control and erratic operation.



Modification of Platen
For Manifold

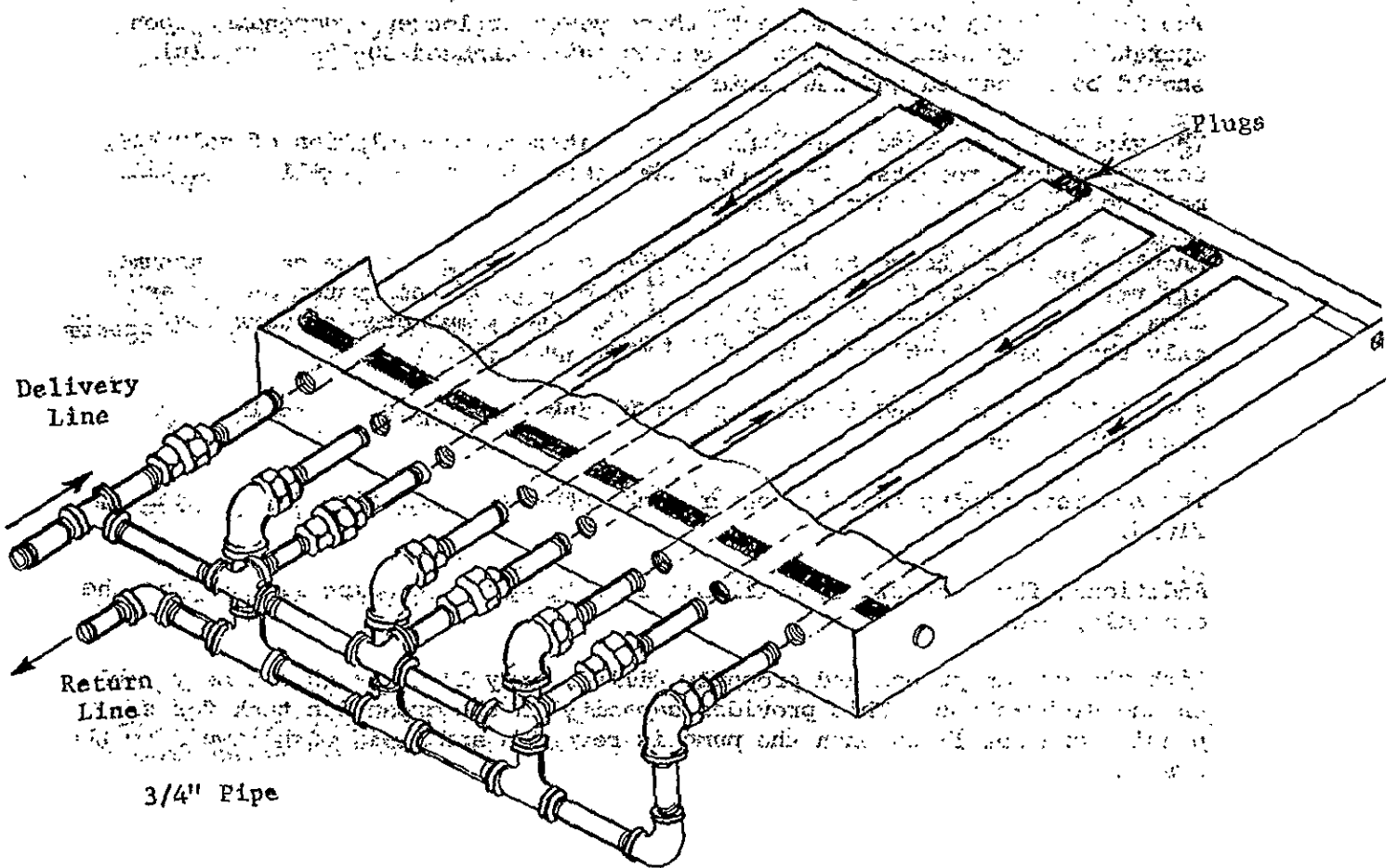


Fig.1

MODEL 6016-M

HEAT TRANSFER FLUID: (See UCON Bul. #F-7490-F)

We highly recommend the use of UCON-type 50-HB-20X as being the most suitable for outstanding service and dependability as heat transfer fluids for our units. Our warranty is based upon the use of this fluid.

This fluid is a polyalkaline glycol derivative. It differs in chemical nature and in performance from natural oils and from other synthetic heat transfer fluids.

In a closed vented system, this fluid has remained substantially unchanged after many months at temperatures up to 500° F.

Heat transfer fluids are not compatible, they should not be mixed.

CHANGE FLUID:

The fluid will eventually lose its clarity and begin to darken, this change in color is a normal reaction.

The fluid should last from one to three years or longer - depending upon operation temperatures. When viscosity has increased 30-35%, the fluid should be discarded and new fluid added.

The viscosity increase (thickening) indicates an accumulation of soluble decomposition products. Prolonged use of thickened fluid will result in malfunction of the entire system.

Should the user choose to disregard our recommendations, we cannot assume any responsibility for the successful operation of the system or for any damage or malfunction which might result. Our manufacturing warranty covers only those installations using the recommended fluid.

The fluid is contained in the expansion tank which holds approximately nine (9) gallons.

The internal piping and the heater tank requires about five (5) gallons of fluid.

Additional fluid should be available to fill the connecting lines; plus the channels, etc.

With the system purged and properly filled, only 1" to 2" should be visible in the sight-glass. This provides capacity in the expansion tank for expansion and for fluid when the pump is reversed and fluid withdrawn from the system.

MODEL 6016-M

VENT CONNECTION:

On the back of the units is a fill connection and a "Vent Connection".

At higher temperatures where the liquid may give off appreciable vapors or fumes, adequate ventilation should be provided on this connection. This vent connection must not be closed at any time. The vapors from the UCON fluid are non-toxic, non-irritating.

If a long vent is required, it is suggested that the vent be trapped near the exit to collect the moisture which can develop on the vent when the unit is cooled.
atmosphere.

MODEL 6016-M

PERFORMANCE:

The Model 6016-M single-zone, heating and cooling unit is a simple unit to operate.

There are four basic electrical controls, plus a pressure vacuum gauge and a manual temperature controller:

START ON-OFF STOP LOCK

START:

When this button is depressed, the starter is manually energized and supplies power to the motor. Voltage is applied to the transformer, which in turn applies power to the ON-OFF switch.

ON-OFF SWITCH:

When the switch is in the "ON" position, power is applied to the temperature controller, which in turn regulates either "heating or cooling".

When this switch is in the "OFF" position, the unit is neither heating or cooling, but is circulating.

STOP:

When the button is depressed, the starter is manually de-energized cutting the voltage to the motor and transformer, making the complete electrical control (115V) system de-activated.

LOCK:

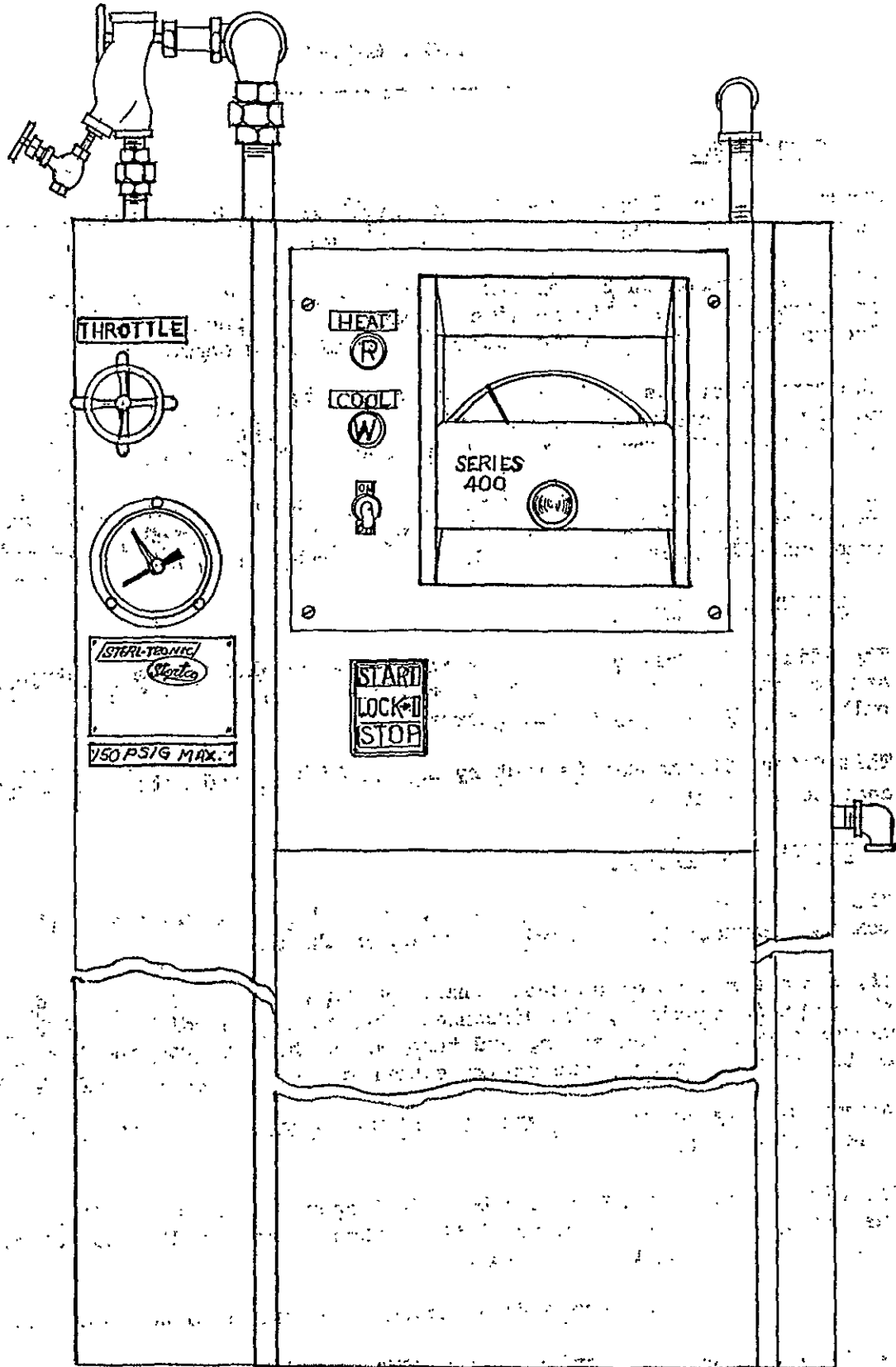
When the switch is in the "STOP" position, the lock can be pulled out. A padlock can be inserted in the lock to prevent anyone from starting the unit.

PRESSURE GAUGE:

This compound pressure gauge has dial reading in inches of mercury vacuum and pounds per square inch pressure.

The red arrow is set to indicate pressure at which the Ful-Flo Valve is fully open.

The black arrow indicates the actual pressure the pump is developing.



MODEL 6016-M

TEMPERATURE CONTROLLER:

Control action of this electro-mechanical indicating temperature controller is provided through the principal of liquid change.

With a variation in temperature, the liquid in the sensing bulb, which is inserted into the delivery line, expands or contracts, causing the bellows located inside the case to actuate the switching mechanism.

The controller has an integral set stop to limit the maximum set temperature to 500° F. Turning the control knob to the right, the indicator needle (black top) will move; this is to be set at the point of heat requirement.

The black indicator needle shows the actual heat, as it slowly advances toward the heat setting. When the two needles are aligned, the heat will automatically shut off. (See Controller Instruction Sheet - Model 40-702).

SAFETY THERMOSTAT:

The adjustable Safety Thermostat is mounted in the inside electrical panel and has it's own sensing bulb which is installed in the heater tank flange bulb well, on the top of the heater tank.

This Safety Thermostat is factory set at 450° F. and acts as a protection against overheating.

DISCONNECT SWITCH:

The Disconnect Switch Lock Handle is mounted on the outside of the electrical box and controls the electrical system of the unit.

If, for one reason or another, while the unit is in operation and a fast shut-down is required, the Disconnect Switch Lock Handle acts the same as a master switch, by depressing and turning the handle from the "ON" position to the "OFF" position, the entire electrical system of the unit is off.

(CAUTION: THE THREE WIRES FROM THE POWER SOURCE TO THE TOP OF THE SWITCH ARE STILL "HOT").

The Disconnect Switch Lock can be made inoperable in the "OFF" position by pushing up on the small lever of the bottom of the handle and putting a regular lock through the opening.

This method prevents anyone from turning the handle to the "ON" position.

In order to place the handle in the "ON" position, depress the handle and turn.

MODEL 6016-M
PRELIMINARY OPERATION

INSTALLATION:

INITIAL PROCEDURES:

This unit is supplied for the 3-phase operation for a selected voltage. Caution must be taken to provide a correctly sized power supply to the unit. This unit must be properly grounded.

All electrical connections must be secure and should be checked before starting.

ELECTRICAL:

It will be necessary to drill a hole in the cabinet for a power supply line.

HEATER CAP. each circuit KW	TOTAL AMPS 3/60/220	TOTAL AMPS 3/60/440
6 KW	17	8

WATER SUPPLY: (See Page 2)

CONNECTING LINES: (See Page 2)

VENT CONNECTIONS: (See Page 5)

MODEL 6016-M

CIRCULATION: (See Dwg. C-682-03839)

FLOW DIAGRAM: (Heating & Cooling)

HEATING:

With the "ON-OFF" switch in the "ON" position, the motor will run and activate the pump, the heat indicator light will illuminate RED.

The fluid is drawn down to the pump by gravity feed; as the fluid is circulated through the pump, a pressure will be indicated on the pressure gauge.

The fluid travels into the bottom of the heater tank where it is heated (relative to the heat requirements set on the temperature controller) by the immersion heater.

As the pressure builds up on the pressure gauge and the fluid reaches the top of the tank, the heat sensor indicates the temperature on the temperature controller.

The fluid is forced into the shell of the heat exchanger (which includes separate cooling tubes) and into the delivery process supply connecting line and circulated through the mold.

NOTE: If the pressure in the line is greater than the set pressure on the pressure gauge, the fluid will by-pass the delivery to the process supply and will be diverted through the Ful-Flo (Safety Valve) back in the return line.

As it is circulated through the mold, the fluid cools down slightly and is returned from the mold to the return connecting line, back through the strainer which collects any foreign matter and back down the return line into the pump and recirculated back into the heater tank.

CAUTION: It is very important that the sight gauge glass indicates that there is an ample supply of fluid contained in the fluid expansion tank. An inch or two visible in the sight gauge glass is sufficient after the unit is properly purged.

COOLING:

With the "ON-OFF" switch in the "ON" position, the motor will run and activate the pump, the cool indicator light will illuminate WHITE.

The hot fluid will flow the same way as in the heating cycle, except that the heater will be disengaged and the solenoid valve will be activated and cold water from water supply line will flow through the strainer, solenoid valve, throttle valve and check valve into the bottom of the heat exchanger, circulating through the cooling tubes inside the heat exchanger and cooling the hot fluid circulating around the cold tubes.

The circulation of water is then routed out through the drain line.

MODEL 6016-M
PRELIMINARY OPERATION

FILLING THE TANK WITH FLUID:

The expansion tank holds nine (9) gallons of fluid; the internal piping and the heater tank require five (5) gallons of fluid.

Additional fluid should be added to fill the connecting lines, plus the channels in the mold.

As the unit is operating in the heating cycle - the fluid expands; caution must be taken to never over fill the tank.

START-UP PROCEDURES: (See Dwg. C-682-03839)

1. Close the Return Line Valve.
2. Place a small container under the opened Blow-Off Valve to catch the fluid.
3. Position the "ON-OFF" switch to the "ON" position. Check motor rotation by observing the pressure gauge. If indicating pressure, rotation is correct; if indicating vacuum, reverse the two motor connections.
4. If there is any air in the lines it will come out of the Blow-Off Valve.
5. Allow the unit to run for a brief period for complete circulation, watch the flow coming out of the Blow-Off Valve for bubbles or erratic flow.
6. When the fluid runs steadily, close the Blow-Off Valve.
7. Open the Return Line Valve.
8. Re-check the Sight Gauge Glass.

OPERATION: (Heating only)

1. Set the desired temperature on the Temperature Controller.
2. Turn the "OFF-ON" switch to the "ON" position.
3. The heat indicator will illuminate (RED) indicating that the unit is in the heating cycle.

If the fluid is cold, the black indicator needle could exceed the setting of the red indicator set point, but as the fluid heats the black indicator needle will indicate system pressure, and unless severe restrictions are in the system, should indicate about 10 PSI below the red indicator. As the circulating fluid is heated, the temperature of the fluid is recorded by the heat indicator needle; as it reaches the previously set temperature, the heater will shut off. As the fluid cools down below the set point, the heater will come back on and maintain a controlled heat.

MODEL 6016-M

CIRCULATION:

FLOW DIAGRAM: (See Dwg. C682-03839)

With the "ON-OFF" switch in the "ON" position - the motor will run and activate the pump.

The fluid is drawn down to the pump by gravity feed; as the fluid is circulated through the pump, a pressure will be indicated on the pressure gauge.

The fluid travels into the bottom of the heater tank where it is heated (relative to the heat requirements set on the temperature controller) by the immersion heater.

As the pressure builds up on the pressure gauge and the fluid reaches the top of the tank, the heat sensor indicates the temperature on the temperature controller.

The fluid is forced up to the delivery process supply connecting lines and circulated through the mold.

NOTE: If the pressure in the line is greater than the set pressure on the pressure gauge - the fluid will by-pass the delivery to the process supply and will be diverted through the Ful-Flo (safety valve) back to the return line.

As it is circulated through the mold, the fluid cools down slightly and is returned from the mold to the return connecting line - back down the return line into the pump and recirculated back into the heater tank.

CAUTION:

It is very important that the sight gauge glass indicates that there is an ample supply of fluid contained in the fluid expansion tank. An inch or two visible in the sight gauge glass is sufficient after the system is properly purged.

MODEL 6016-M

COOLING:

THROTTLE VALVE:

The Throttle Valve is used as a control valve to regulate the amount of cold water entering the bottom of the Heat Exchanger, circulating up into the cooling tubes to cool down the circulating hot fluid.

The time lapse between heating and cooling can be regulated by this valve.

If the "COOL-HEAT" indicator light switches from "COOL" to "HEAT" in rapid succession, too much cold water is entering the cooling tubes; results could damage the Heat Exchanger.

Close the Throttle Valve to a point where a reasonable time element is established, depending upon the temperature of the mold.

CHECK VALVE:

This vertical lift check valve eliminates the back flow of water from the heat exchanger.

BLOW-OFF VALVE:

The Blow-Off Valve is used to clean out the brass filter screen of foreign materials brought in with the water supply.

DRAIN VALVE:

This Drain Valve is used to completely drain the entire unit of fluids. A hose line or a pipe can be connected to the valve and directed to a floor drain or a container.

PRESSURE RELIEF VALVE:

This Pressure Relief Valve is rated at 150 PSI and its function is to protect the heat exchanger.

If the drain line is restricted and the pressure exceeds 150 PSI, the valve will open up to release the pressure in the line.

As soon as the pressure returns to normal (65 PSI) the valve will close.

MODEL 6016-M
PREVENTATIVE MAINTENANCE

Periodic inspection of the following equipment must be made to maintain optimum performance of your Sterlco Temperature Control Unit.

MOTOR:

1. Clean out the motor air intake grill of dust and any oil accumulation.
2. Check the bolts and nuts that hold the motor to the support.
3. Make certain that the belts are aligned with the pump. Replace if necessary.

PUMP:

1. It is a good practice to keep the pump as clean as possible. This will facilitate inspection, adjustment and repair work and help prevent omission of lubrication to fittings covered or hidden with dirt.
2. Check the bolts and nuts that hold the pump to the support.
3. Make certain that the belts are aligned with the motor.

Under normal operating conditions, the pump packing should allow a drop or two of oil per minute. The packing is of the finest type available for this service and it depends upon a small amount of oil flow for lubrication.

When the new unit is first started, the packing should be checked periodically and tightened as the pump wears in.

Do not over-tighten the packing gland to a point where the pump will not drip. This will shorten the life of the packing and will damage the shaft.

4. Grease all zerks after 500 hours of operation or after 60 days, whichever comes first.

Use #2 ball bearing grease. If the pump is hot, use a high temperature.

VENT CONNECTION:

1. Check connecting lines for leaks.
2. Check to see if vent connections are open at all times.

DRAIN LINE:

1. Check outlet of drain line for any obstructions or back pressure.

DRIP PAN:

1. Clean any fluid, dust, or dirt accumulation from pan.

PREVENTATIVE MAINTENANCE (continued)

FLUID:

1. Check the fluid for viscosity. Prolonged use of thickened fluid will result in malfunction of the entire system.
2. Check level of fluid in the sight glass.
3. If fluid level decreases, check all connections for leaks.

HEAT EXCHANGER:

1. Keep exterior of the heat exchanger clear of dust or dirt.
2. Check water supply line for correct pressure, leaks, etc.

STRAINERS:

1. Clean out the strainers twice a year, as a minimum, depending upon usage and operating conditions.

MODEL 6016-M

TROUBLE SHOOTING

RAPID DROP IN PRESSURE:

PROBABLE CAUSE

- a.) Leaks in connecting lines
- b.) Air in circulating lines
- c.) Low fluid
- d.) Ful-Flo Valve
- e.) Pressure line

PROBABLE REMEDY

- a.) Check all connecting lines
- b.) Refer to pages 11 & 14 procedures
- c.) Check sight gauge glass
- d.) Broken spring, valve stuck open
- e.) Check for broken line, loose connections.

NO PRESSURE:

(See 'Rapid Drop in Pressure')

- a.) Excess pump pressure
- b.) Water in circulating line

- a.) Adjust thrust bearing
- b.) Refer to pgs 13 & 14 'Start-Up' procedures

TEMPERATURE CONTROLLER:

- a.) Heat indicator needle does not match the heat of the mold.

- a.) Release the locknut. Turn the "Offset Adjusting Nut" right or left to change the F^D setting. Retighten the locknut. (See Fenwall Bul. (Fig. 2))

HEATING & COOLING:

(Heating, but no Cooling)

- a.) Low or no water
- b.) Throttle valve closed
- c.) Blow-Off valve inoperable
- d.) Solenoid valve inoperable
- e.) Clogged strainer
- f.) Clogged drain line

- a.) Check pressure of water supply line
- b.) Adjust the valve
- c.) Close valve tight
- d.) Check valve for proper operation. Watch the drain line
- e.) Dirt from strainer entered solenoid valve
- f.) Disconnect and check the line

COOLING TOO FAST:

- a.) Throttle valve
- b.) Solenoid valve dirty

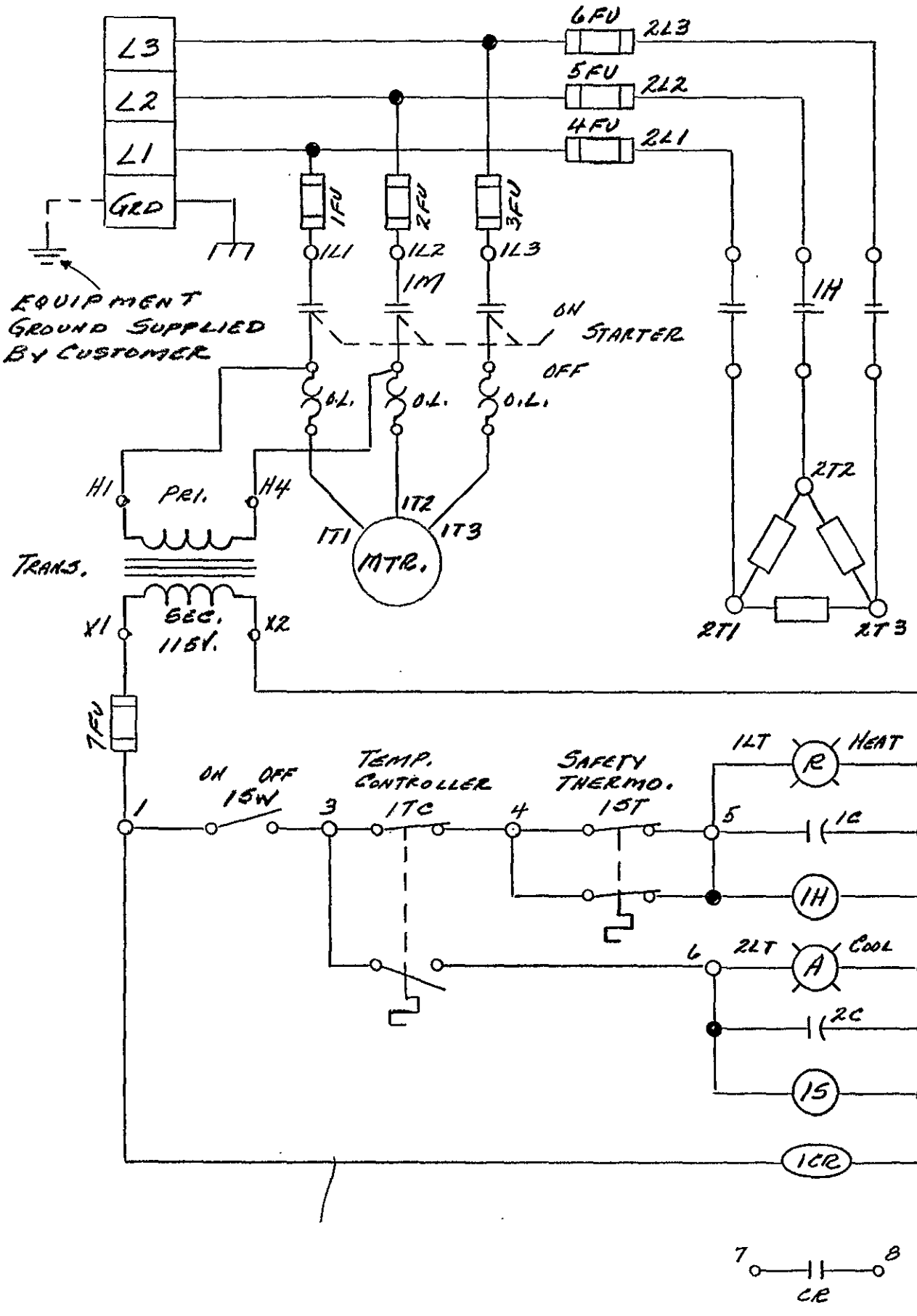
- a.) Close the valve slightly
- b.) Check valve for proper operation. Watch drain line.

COOLING TOO SLOW:

- a.) Throttle valve

- a.) Open the valves slightly, Watch drain line

DWG. NO. A682-01682



NOTE: CUSTOMER
MAY GROUND IF
POWER SUPPLY PERMITS.

USED ON 6016-17X

STERLING, INC.
MILWAUKEE, WIS.

TITLE 3/50-60/208-600 V.
ELEMENTARY DIAGRAM

DR. CHK. DATE
FM 4-18-75

SCALE 2

DRG. NO. A682-01682

SPARE PARTS - MODEL 6016-M

<u>PART NO.</u>	<u>DESCRIPTION</u>	<u>PRICE</u>
075-00081	Pump - (HL-124-L)(W/O Press. Relief Valve)	\$293.00
075-00039	Pump - (HL-124-L) (W/ Press. Relief Valve)	435.00
100-00001	Pulley - Pump	9.50
720-09216-13	Motor - 1/2 H.P. 3/60/50/208,220-440V	87.00
100-00019	Pulley - Motor	4.00
100-00005	"V" Belt - (4L340)	3.00
729-00027	Contactor - 30 AMP (Honeywell)	30.50
729-00038	Contactor - 30 AMP (C.H.)	26.00
729-00045	Contactor - 30 AMP (ITE)	22.00
726-00033	Starter - Motor - Size "0" (A.B.)	57.50
704-00027	Transformer (200VA-460/230V-115-50-60 Hz)	34.00
725-00557	Fuse - Main - FRS-20	7.00
725-00506	Fuse - Control - FNM- 1 1/4A	2.00
725-00539	(230 Volt Power Supply) Fuse - Motor - FRN-3.5 @ 250V	1.50
725-00574	(460 Volt Power Supply) Fuse - Motor - FRS - 1.8 @ 600V.	5.00
724-00034	Thermostat - Safety W/Stop at 450°	44.00
724-00009	Controller - Dual (Circuit)	195.00
037-00041	Gauge - Pressure Vacuum	27.50
715-10019	Pilot Light Receptacle (White)	4.00
715-10020	Pilot Light Receptacle (Red)	4.00
717-04006	Switch - Heater Control	4.50
542-00003	Insulation - Tank	7.50
542-00007-06	Gasket - Heater Tank	.70
722-00043-01	Immersion Heater - 2" - 6 KW - 240V	111.00
722-00043-02	Immersion Heater - 2" - 6 KW - 480V	109.00
731-	Over-Load Elements - RXf. to A.B. Bulletin 815	4.00

Please give model and serial number when ordering parts. This is necessary to furnish the correct replacements. TERMS: 30 days F.O.B. Milwaukee, Wisconsin
 Prices are subject to change without notice.
 STERLING, INC. 5200 W. Clinton Avenue, Milwaukee, Wisconsin 53223

SPARE PARTS - MODEL 6016-M

<u>PART NO.</u>	<u>DESCRIPTION</u>	<u>PRICE</u>
732-00012	Valve - Solenoid, 1/2" - 115V	\$ 41.50
044-00013	Valve - Check , 1/2"	12.00
044-00138	Valve - Pressure Relief	10.00
106-00024	Heat Excahnger, 1.5 sq. ft.	115.00
573-00004	Screen - "Y" Strainer - 1/2"	1.00
573-00003-1	Screen - "Y" Strainer - 1"	1.00
162-00017-01	Sight Gauge Glass	3.00

FLEXIBLE METAL HOSES

572-16969-05	1/2" x 6 ft.	63.00
572-16969-03	1/2" x 8 ft.	81.00
572-16969-10	1/2" x 10 ft.	98.00
572-16969-02	3/4"x 6 ft.	91.50
572-16969-06	3/4" x 8 ft.	119.50
572-16969-12	3/4" x 10 ft.	145.50
572-16969-07	1" x 6 ft.	117.00
572-16969-04	1" x 8 ft.	152.00
572-16969-08	1" x 10 ft.	185.00

Please give Model and Serial Number when ordering parts. This is necessary to furnish the correct replacements. TERMS: 30 days F.O.B. Milwaukee, Wisconsin. Prices are subject to change without notice.
 STERLING, INC. 5200 W. Clinton Avenue, Milwaukee, Wisconsin 53223